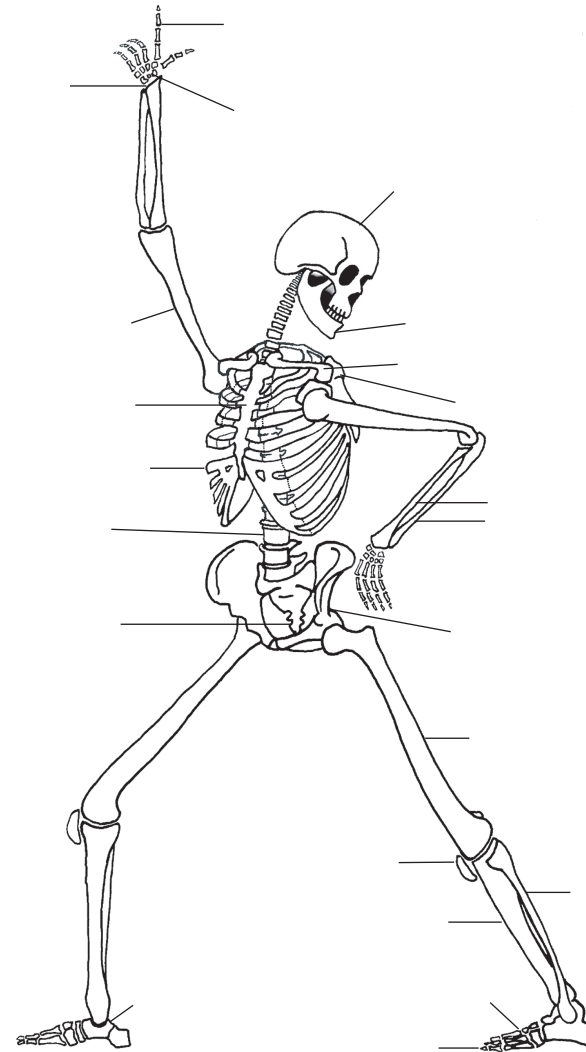


carpals (wrist bones)  
 tarsals (ankle bones)  
 humerus  
 phalanges (toes)  
 mandible (jaw bone)  
 tibia (shin bone)  
 ulna

Pelvis (hip bone)    phalanges (fingers)    fibula  
 femur (thigh bone)    sternum (breast bone)  
 scapula (shoulder blade)    metacarpals (hand bones)  
 coccyx (tail bone)    radius    clavicle (collar bone)  
 patella (knee cap)    vertebrae (back bones)    ribs  
 cranium (skull bone)



carpals (wrist bones)  
 tarsals (ankle bones)  
 humerus  
 phalanges (toes)  
 mandible (jaw bone)  
 tibia (shin bone)  
 ulna

Pelvis (hip bone)    phalanges (fingers)    fibula  
 femur (thigh bone)    sternum (breast bone)  
 scapula (shoulder blade)    metacarpals (hand bones)  
 coccyx (tail bone)    radius    clavicle (collar bone)  
 patella (knee cap)    vertebrae (back bones)    ribs  
 cranium (skull bone)